

Integrating migrants for integrating regions - Shared challenges around the Mediterranean

Philippe Fargues, European University Institute

Università degli Studi di Torino, 11 marzo 2021
inaugurazione della Chair Jean Monnet European Migration Studies

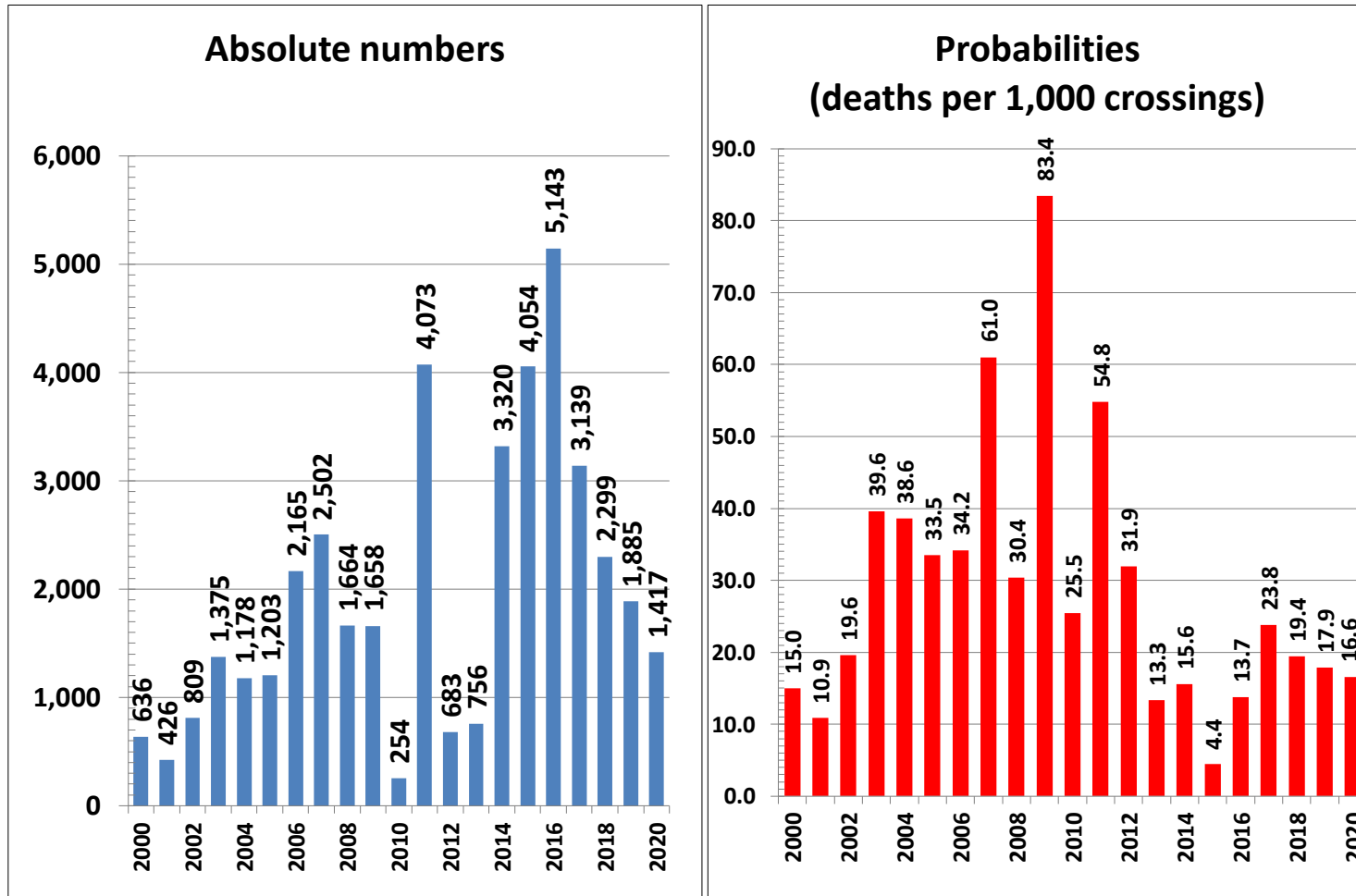
The Arab World and the European Union: two regions with comparable migration patterns

Migrant stocks in the Arab States and the European Union (millions and % of population)

Region	Arab States		EU-28	
Total Population	411,5		512,4	
Inward Migration	40,2	<i>9,8%</i>	57,9	<i>11,3%</i>
Outward Migration	29,9	<i>7,3%</i>	36,8	<i>7,2%</i>
Intra-regional Migration	14,0	<i>3,4%</i>	20,5	<i>4,0%</i>
Migration from the region to the other region	7,6	<i>1,8%</i>	0,2	<i>0,0%</i>

Source: UNDESA, International Migrant Stock 2019 by destination and origin,
<https://www.un.org/en/development/desa/population/migration/data/estimates2/estimates19.asp>

Mortality at sea during the cross-Mediterranean journey to Europe all routes combined 2000-2020



Mashreq: armed conflicts, critical triggers of migration

Inward and outward migrant stocks in the Mashreq - 2019 (in thousands)

Country	inward migrant stock	Outward migrant stock	Total population	Inward - Outward	
				In numbers	% population
Egypt	504	3.548	98.771	-3.044	-3,1%
Iraq	368	2.034	40.854	-1.665	-4,1%
Jordan	3.347	784	8.080	2.562	31,7%
Lebanon	1.864	844	5.965	1.020	17,1%
Palestine	254	3.891	5.196	-3.637	-70,0%
Sudan	1.223	2.041	44.248	-818	-1,8%
Syria	868	8.225	20.202	-7.358	-36,4%
Yemen	386	1.268	29.395	-882	-3,0%
Total	8.813	22.634	252.710	-13.821	-5,5%

Source: UNDESA, International Migrant Stock 2019 by destination and origin,
<https://www.un.org/en/development/desa/population/migration/data/estimates2/estimates19.asp>

Lower Egypt soon flooded by the Mediterranean?

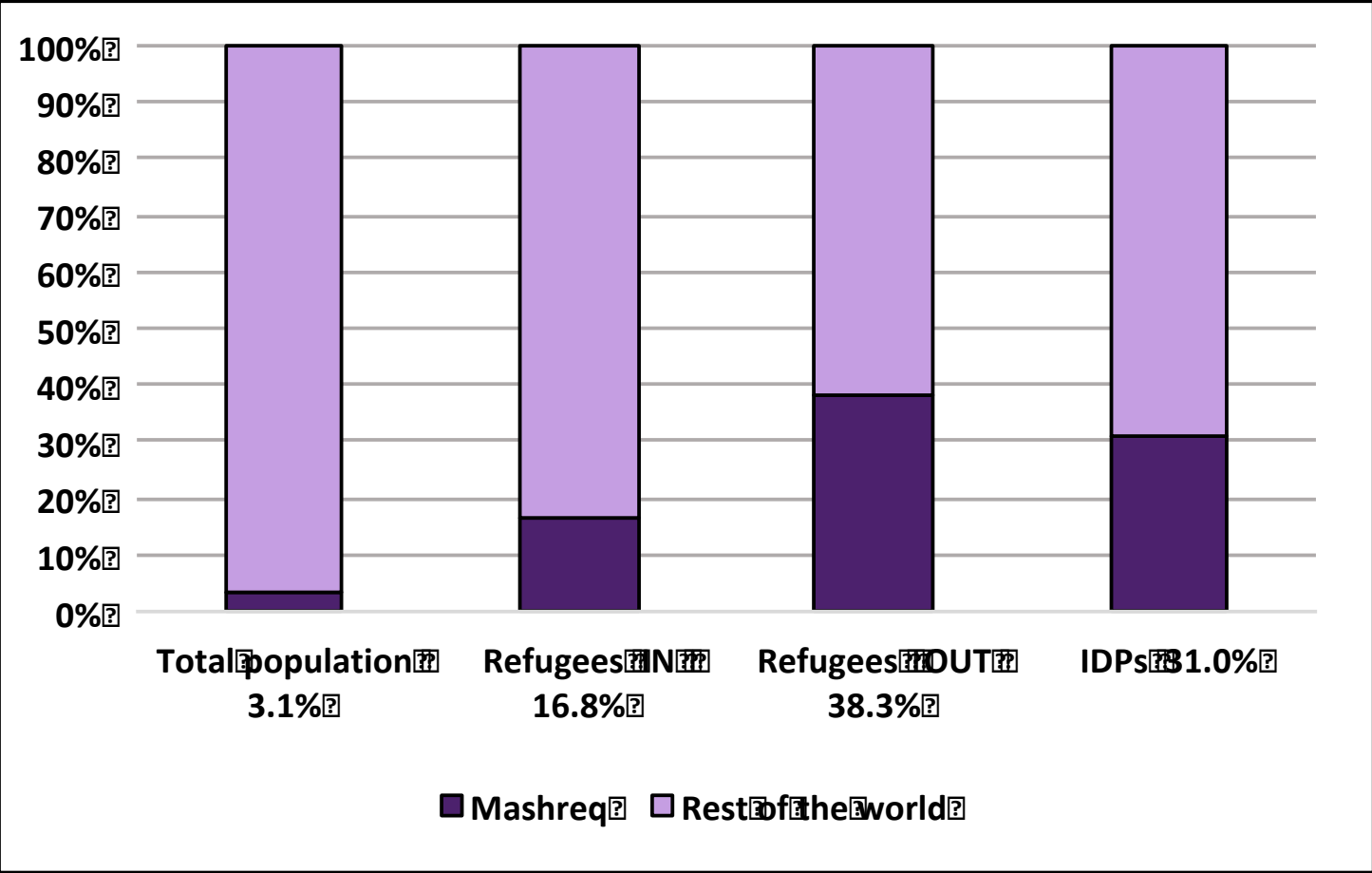
water elevation = 2 meters

<http://www.floodmap.net>



Mashreq's Share of the World's Stock of Forced Migrants - Mid-2018

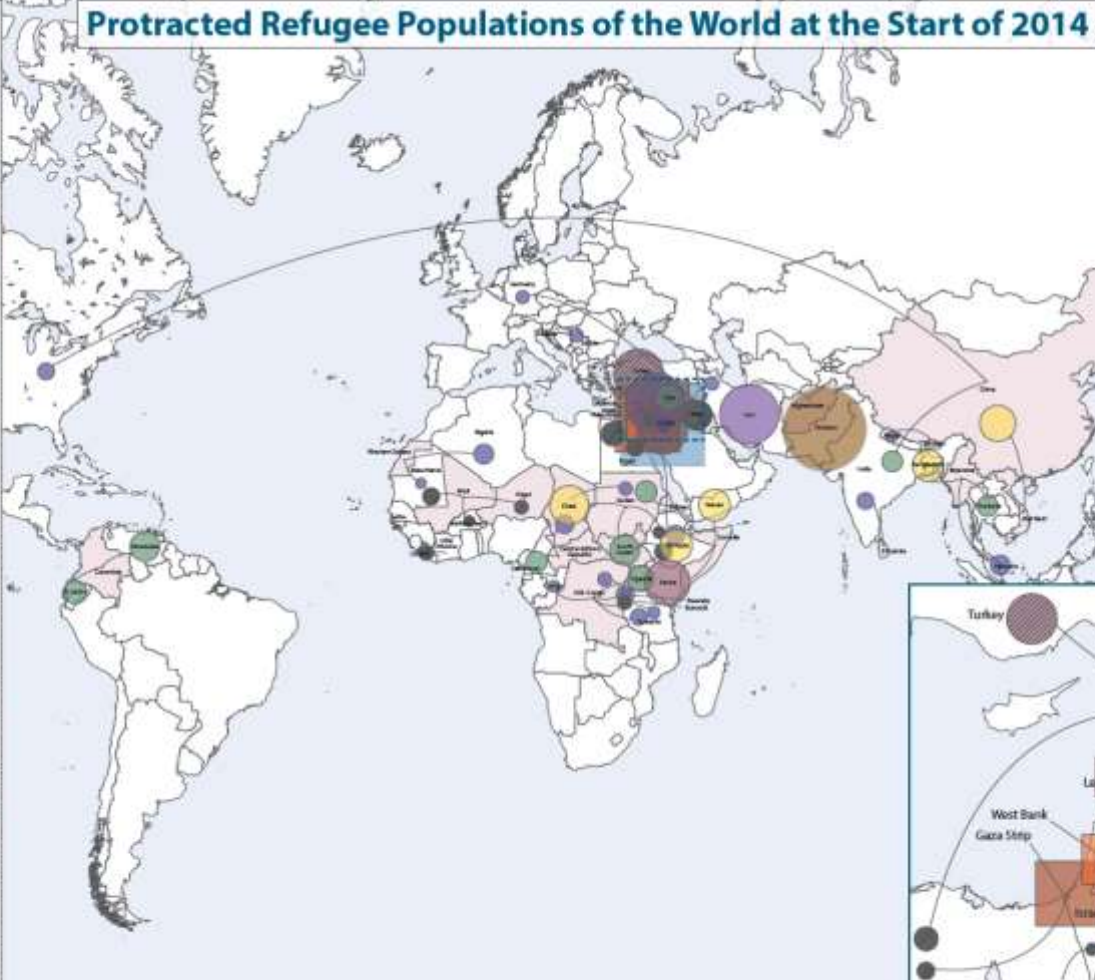
UNHCR



Protracted Refugee Populations of the World at the Start of 2014

GRAND TOTAL 14,402,040
PROTRACTED POPULATION 1,121,226
HIGHLY PROTRACTED POPULATION 1,036,804

COUNTRY OF ORIGIN	TOTAL
PALESTINE	5,100,073
Gaza Strip	1,676,073
West Bank	3,424,000
AFGHANISTAN	2,428,861
Afghanistan	1,412,073
Iran	1,016,788
SYRIA	2,336,627
Lebanon	212,244
Jordan	183,400
Iraq	182,244
Egypt	112,244
Turkey	112,244
SOMALIA	946,620
Kenya	473,244
Ethiopia	246,620
Somalia	226,756
JUDAN	594,600
China	182,244
South Korea	206,111
North Korea	206,245
MYANMAR	618,896
Thailand	212,244
Malaysia	183,400
Indonesia	223,252
D.R. OF THE CONGO	378,855
Zambia	182,244
Tanzania	112,244
Cote d'Ivoire	84,367
Guinea	7,999
COLOMBIA	338,822
Peru	206,244
Brazil	132,578
VICTNAM	296,896
China	206,244
IRAN	282,202
Iraq	182,244
Jordan	84,367
Syria	15,591
CENTRAL AFRICAN REPUBLIC	217,822
Chad	182,244
Cote d'Ivoire	35,578
LIBERIA	212,822
Sierra Leone	182,244
Ivory Coast	30,578
CHINA	182,822
North Korea	182,244
IRAQ	182,822
Syria	182,244
WESTERN SAHARA	116,822
Morocco	116,244
SOUTH SUDAN	71,822
Kenya	71,244
SIERRA LEONE	68,822
Liberia	68,244
ETHIOPIA	52,822
Kenya	52,244
RUSSIA	42,822
U.S. of Georgia	42,244
CROATIA	41,822
Serbia and Montenegro	41,244
CHAD	41,822
Niger	41,244
BURUNDI	41,822
Tanzania	41,244
WESTERN	39,822
Iran	39,244

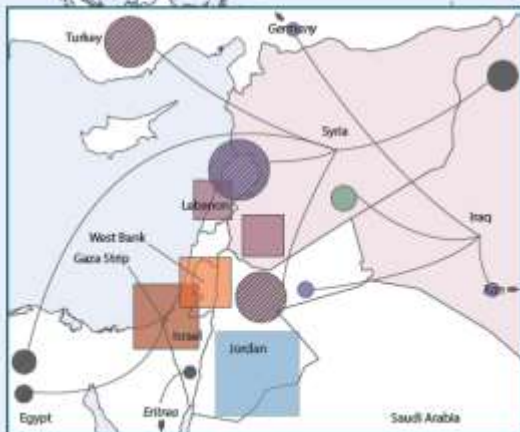


DEFINITION
 A protracted refugee population exists when 25,000 or more refugees originating from the same country have sought refuge in another country for at least five consecutive years. They are in protracted refugee situations because of the nature of their refugee status, membership of a particular social group or political opinion and a stable or continuing unwillingness to return to their country of origin.

DEFINITION
 A highly protracted refugee population exists when 10,000 or more refugees originating from the same country have sought refuge in another country for at least five consecutive years. They are in highly protracted refugee situations because of the nature of their refugee status, membership of a particular social group or political opinion and a stable or continuing unwillingness to return to their country of origin.

DEFINITION
 A non-refugee is a person who is not a refugee or a person who is not a refugee because of the nature of their refugee status, membership of a particular social group or political opinion and a stable or continuing unwillingness to return to their country of origin.

Produced by Giovanni Tassinari



Entries of Syrian refugees in Europe 2011-2016

Source: Fargues 2016

(1) Syrians smuggled by sea to Greece and Italy		641.502
(2) First-time asylum applicants from Syria in the EU28		827.500
(3)=(2)/(1) Proportion of Syrian asylum seekers smuggled into Europe through Greece and Italy		77,5%
(4) Decisions on asylum applications lodged by Syrians	Total	564.875
	Positive	545.470
	%	96,6%
(5)=(1) × (4) Expected number of Syrians smuggled by sea who would have obtained a humanitarian visa before travelling to the EU		619.465

Source: Author's calculation on the basis of Greece and Italian Police data on persons smuggled by sea and EUROSTAT data on asylum claims and decisions

Gulf States: immigration with no inclusion

Inward and outward migrant stocks in the Gulf States - 2019 (in thousands)

Country	inward migrant stock	Outward migrant stock	Total population	Inward - Outward	
				In numbers	% population
Bahrain	741	60	1.465	681	46,5%
Kuwait	3.035	205	4.247	2.829	66,6%
Oman	2.286	25	4.790	2.261	47,2%
Qatar	2.230	172	2.416	2.058	85,2%
Saudi Arabia	13.122	296	33.839	12.826	37,9%
United Arab Emirates	8.587	154	9.688	8.433	87,0%
Total	30.002	913	56.444	29.089	51,5%

Source: UNDESA, International Migrant Stock 2019 by destination and origin,
<https://www.un.org/en/development/desa/population/migration/data/estimates2/estimates19.asp>

Maghreb: Transit with no destination

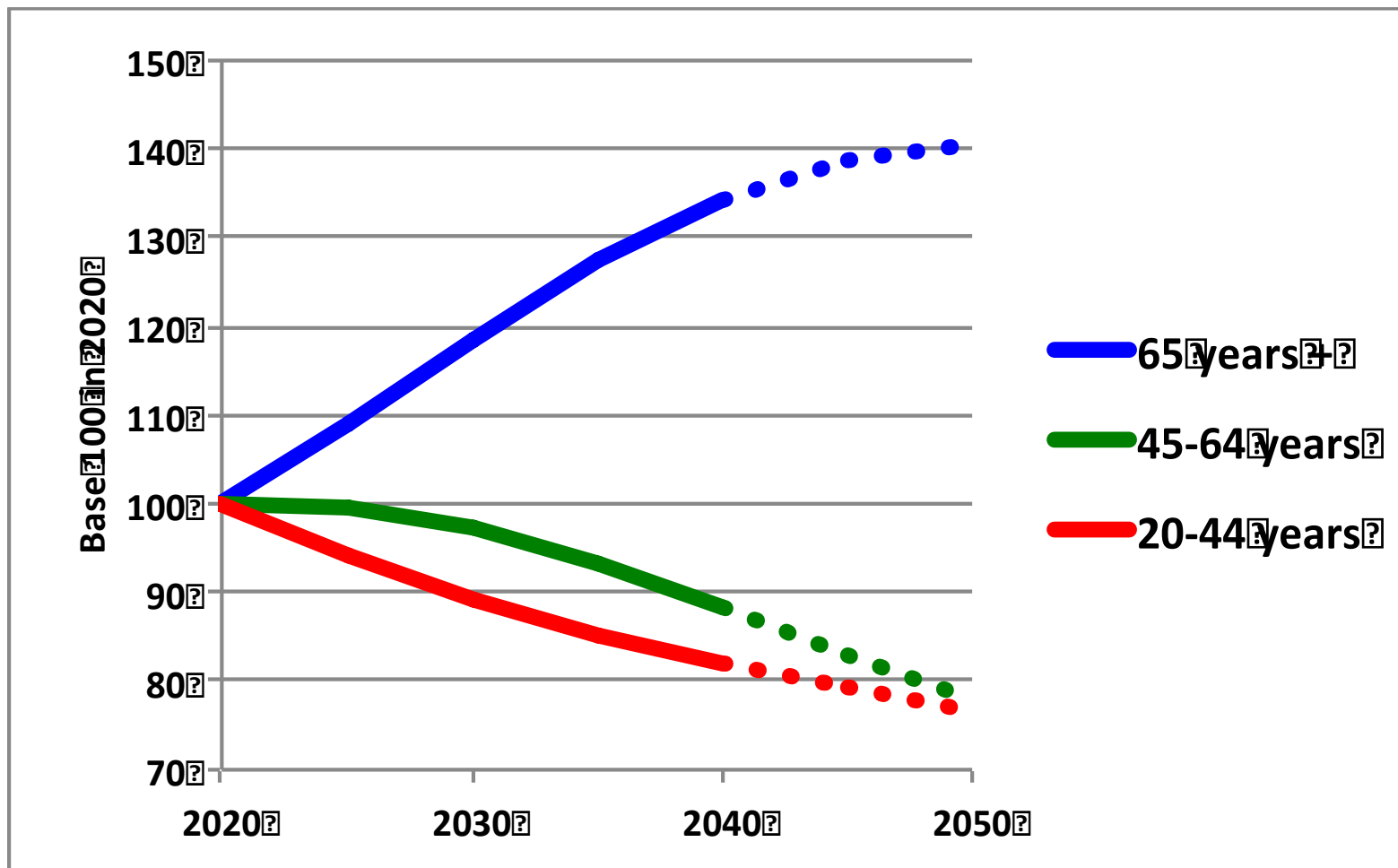
Inward and outward migrant stocks in the Maghreb - 2019 (in thousands)

Country	inward migrant stock	Outward migrant stock	Total population	Inward - Outward	
				In numbers	In percentage of the population
Algeria	249	1.945	42.377	-1.696	-4,0%
Libya	818	181	6.606	638	9,7%
Mauritania	173	129	4.470	44	1,0%
Morocco	99	3.136	36.052	-3.037	-8,4%
Tunisia	57	813	11.725	-756	-6,4%
Total	1.396	6.203	101.230	-4.807	-4,7%

Europe: Ageing and its paradoxes

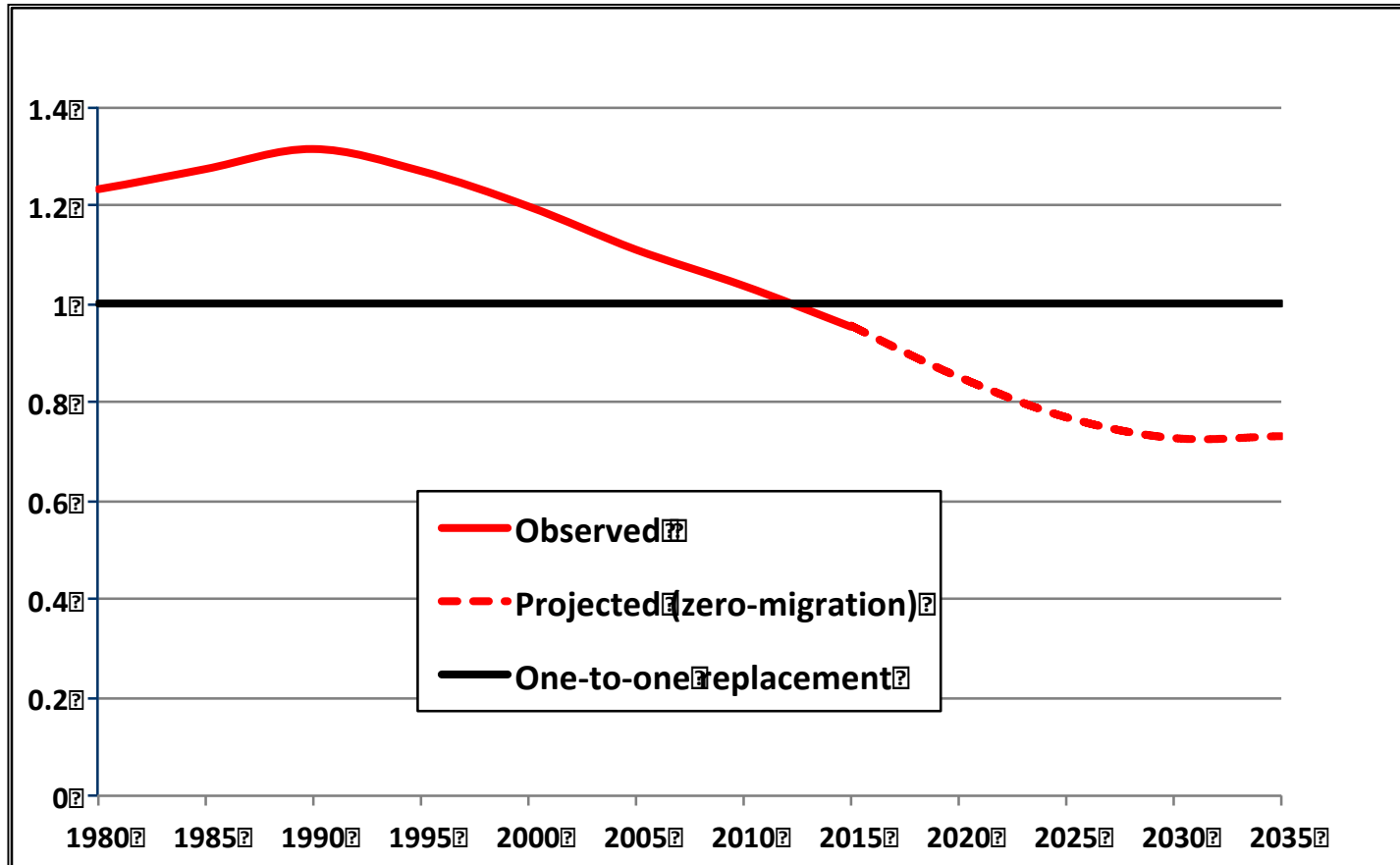
Projected population of the EU27 by broad age groups in the no migration scenario

Eurostat database, accessed on 22.10.2019



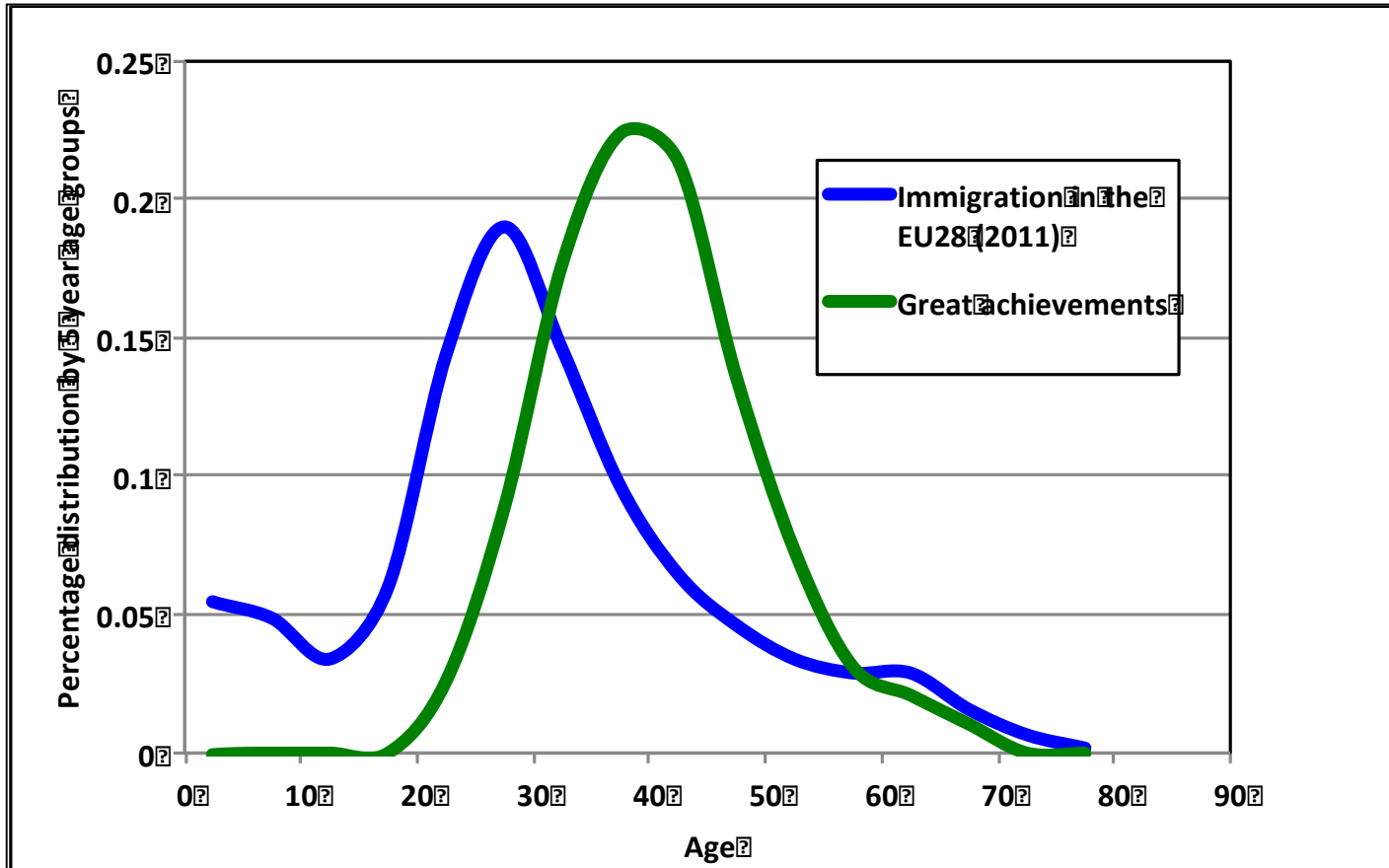
Overall replacement ratio at age 30 in the EU28

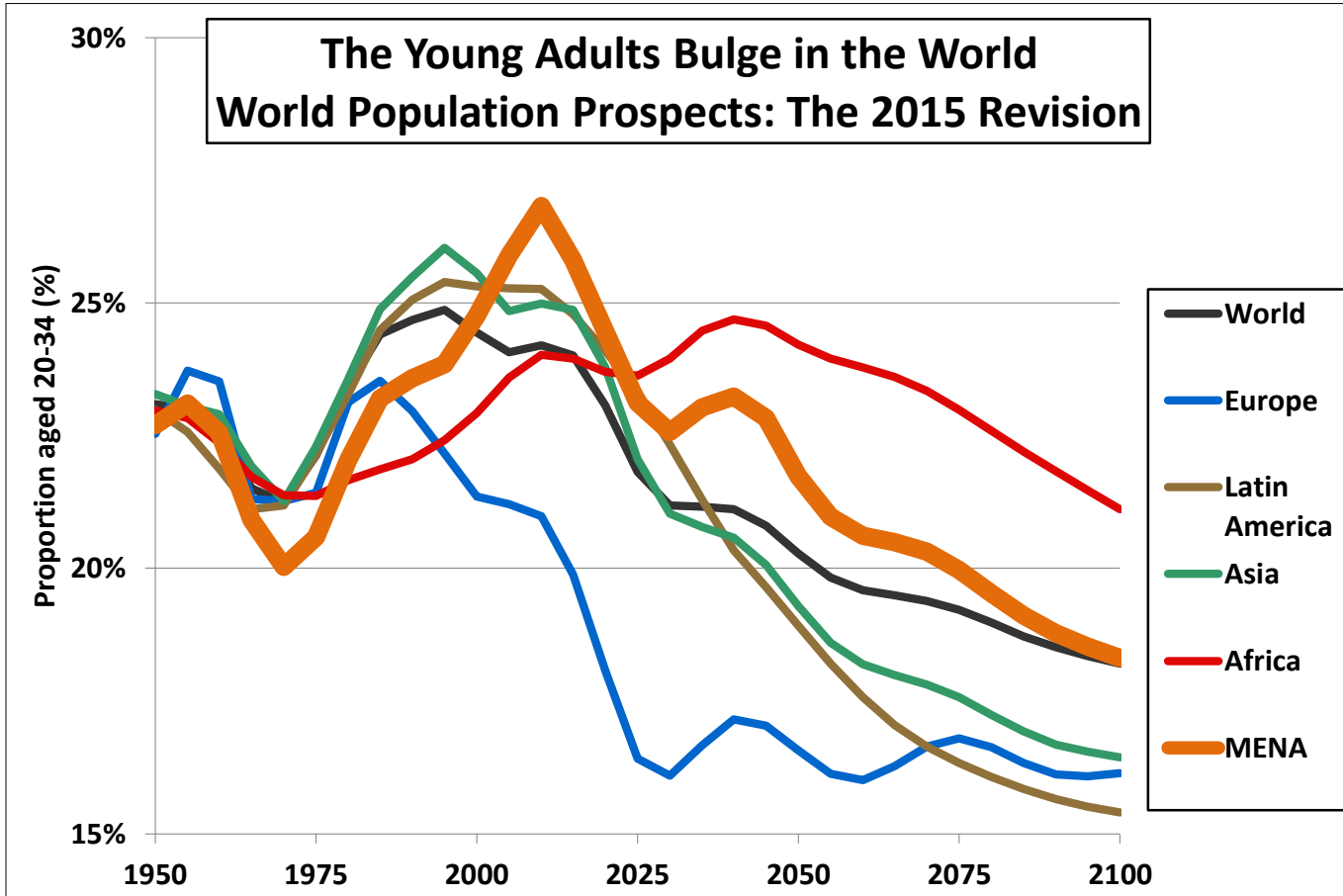
Fargues 2017



Age at migration and great achievements

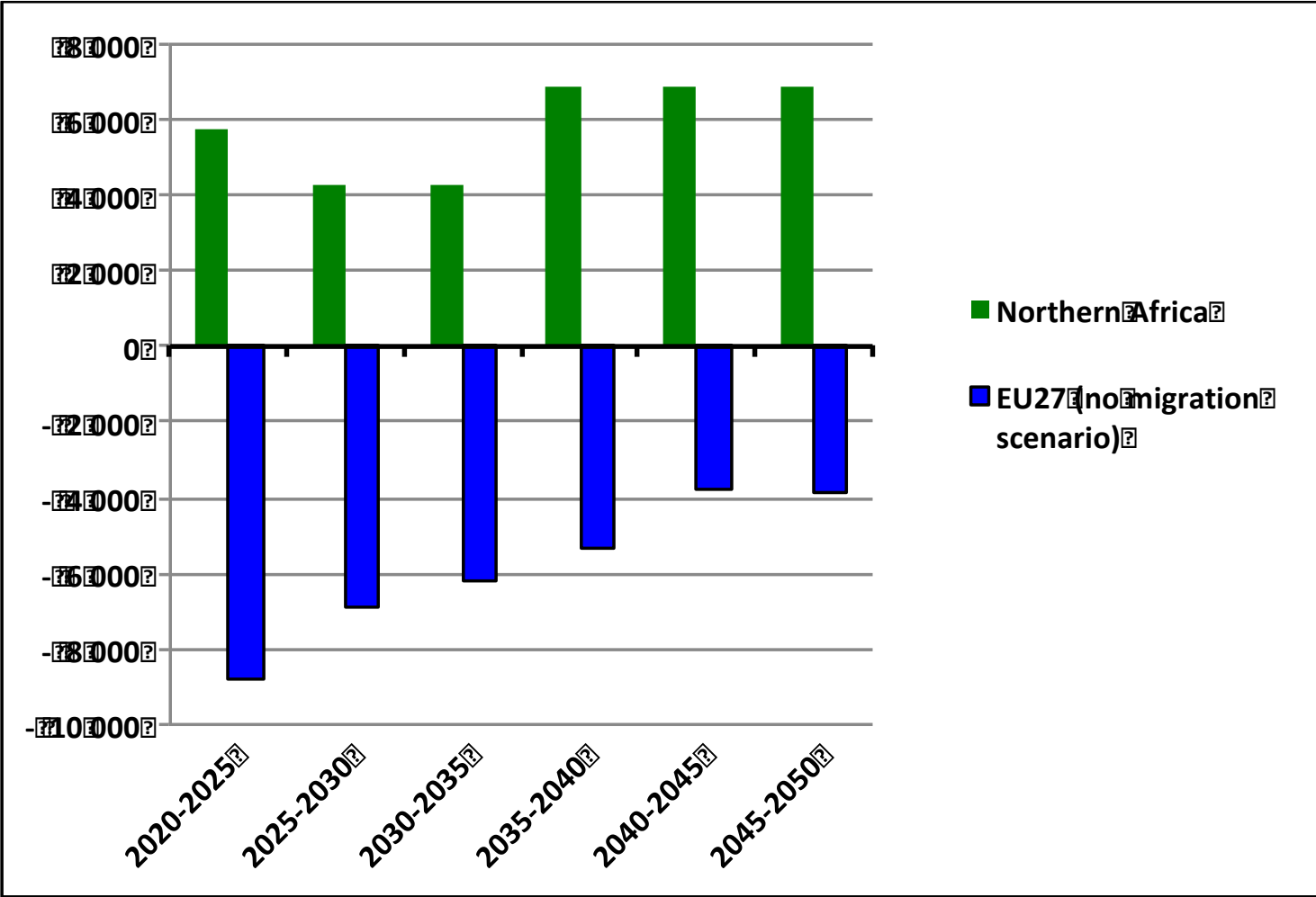
[Sources: age at migration: EUROSTAT; age at great achievements: Jones 2010]





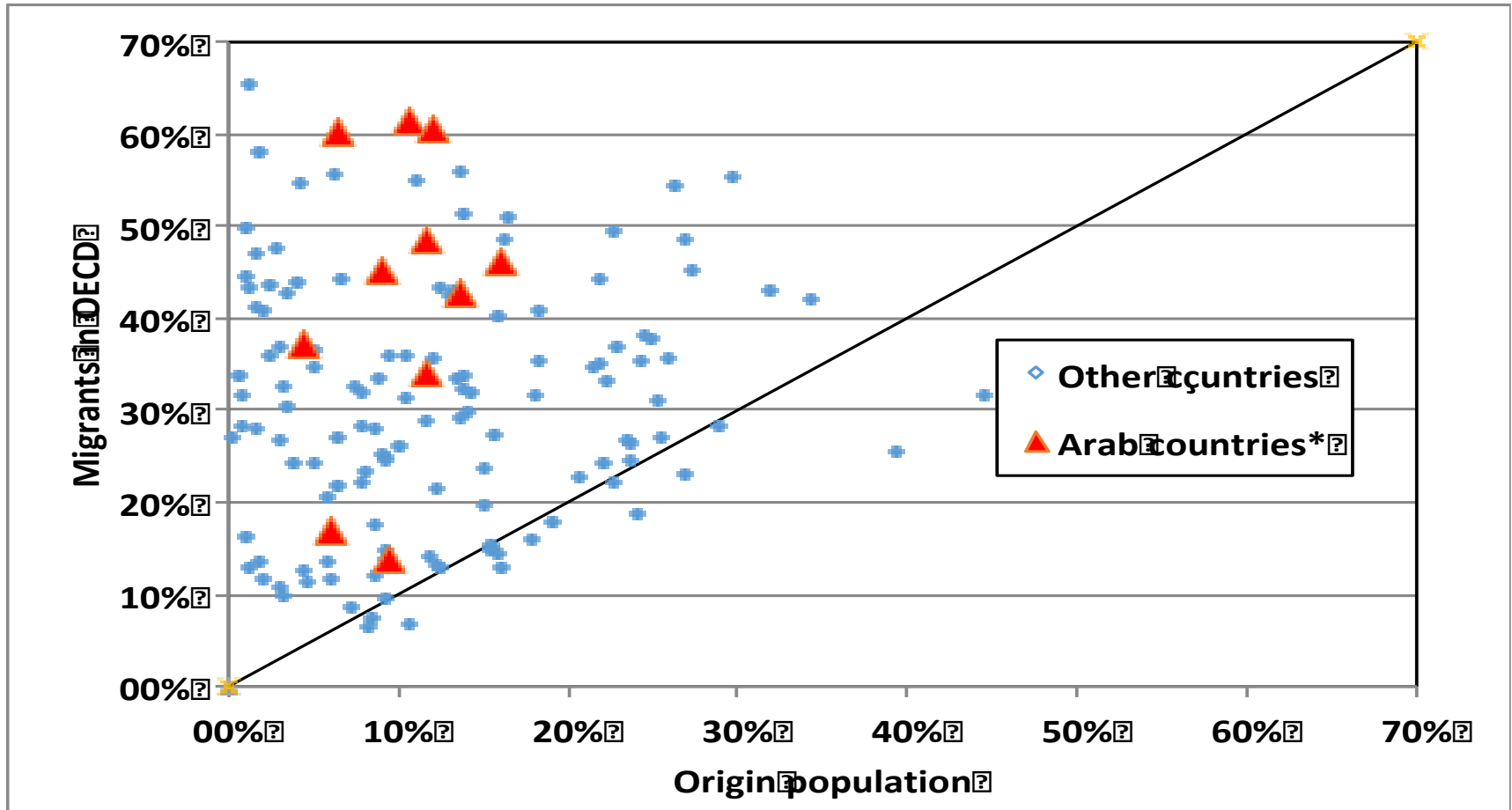
Population increase at 20-44 years (thousands) – 2020-2050

Sources: UNDESA Population Prospects, the 2015 Revision (Northern Africa) and EUROSTAT (EU27)



Population aged 25+ with a tertiary education (ISCED 5 or+) among immigrants in OECD and their origin countries - 2010

Fargues P. 2017, ED/GEMR/MRT/2019/T1/1, UNESCO



*Algeria, Bahrain, Jordan, Kuwait, Lebanon, OPT, Oman, Saudi Arabia, Syria, Tunisia, UAE

Conclusion: overcoming integration deficits

Non-citizens in the Arab countries

in %, of resident population Mid-2014

Source: Elzein, DeJong, Fargues ,.. *The Lancet* (2016)

Gulf States		
Country	Migrants	Refugees
<i>Bahrain</i>	51,1%	0,0%
<i>Kuwait</i>	68,7%	0,0%
<i>Oman</i>	43,7%	0,0%
<i>Qatar</i>	85,7%	0,0%
<i>Saudi Arabia</i>	32,4%	0,0%
<i>UAE</i>	88,5%	0,0%
Sub-total	49,4%	0,0%

Other Western Asia		
Country	Migrants	Refugees
<i>Iraq</i>	0,3%	0,7%
<i>Jordan</i>	7,3%	37,7%
<i>Lebanon</i>	6,6%	31,8%
<i>Palestine</i>	<i>n.a.</i>	44,9%
<i>Syria</i>	0,6%	3,0%
<i>Yemen</i>	2,3%	1,0%
Sub-total	1,7%	7,6%

Northern Africa		
Country	Migrants	Refugees
<i>Algeria</i>	0,3%	0,2%
<i>Egypt</i>	0,3%	0,3%
<i>Libya</i>	12,6%	0,4%
<i>Morocco</i>	0,3%	0,0%
<i>Sudan</i>	1,2%	0,6%
<i>Tunisia</i>	0,4%	0,0%
Sub-total	0,8%	0,3%